

# Curvv.ev

suv coupé



**Curvv.ev Series X** —  
powered for long drives

**BNCAP**  
5-star safety rating\*



unlimited joy —  
with lifetime warranty

Lifetime  
Warranty<sup>++</sup>

on HV battery pack



# i n d e x —

1. Shaped to Stun
2. Shaped for Innovative Technology
3. Shaped for Grandeur
4. Shaped for Absolute Safety
5. Shaped for Performance
6. Shaped for your various Charging needs
7. Shaped for different Personas

# shaped to stun —

Up your style game with SUV allure and coupé sophistication.



## Differentiated coupé like design

Experience the allure of an SUV with the sophistication of a coupé.



## Body cladding in piano black finish

Define your elegance with every drive.



## Squared wheel arches



**Bumper skid plates in satin silver finish**

Combine toughness with style, giving your vehicle a sophisticated yet robust appearance.



**Rear spoiler in gloss piano black**

Designed for stunning looks and optimised aerodynamics.

**Contrast roof in black**

Complements the sleek coupé design adding a touch of sophistication.



**Smart digital connected DRL  
with welcome & goodbye animation**

Greet and bid farewell with our  
distinctive signature DRLs.



**Sequential  
turn indicators**

Lead the way with  
style and safety.



**Smart charging animation**

Stay informed about your  
charge status at a glance.



**LED projector head lamp**

Drive with confidence  
and clarity with  
unmatched visibility.



## Smart digital connected LED tail lamps with animation

Cutting-edge lighting technology meets style.



## Smart digital steering wheel

Superior ergonomic experience with seamlessly integrated controls.



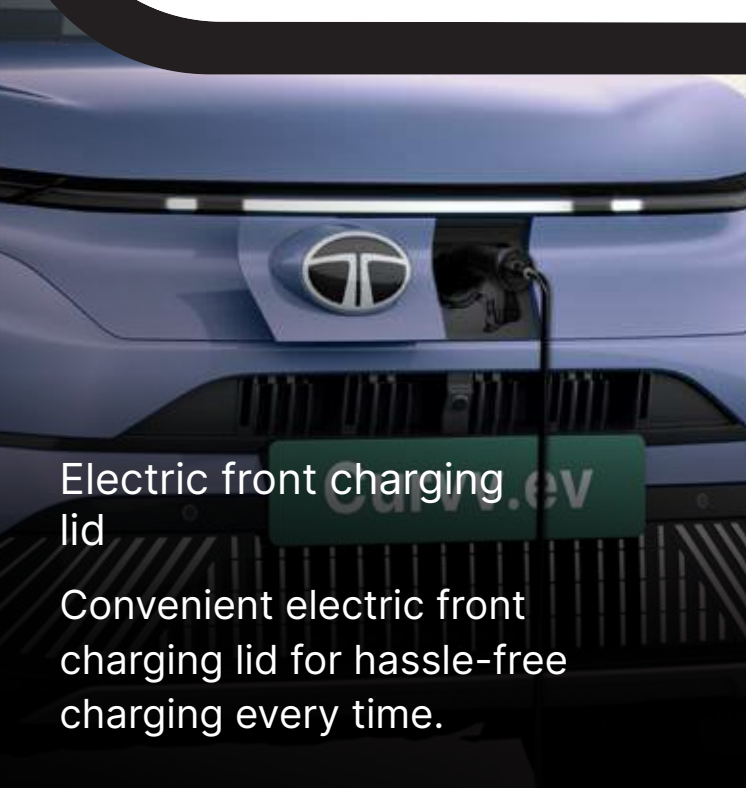
## Flush door handles

Enhanced vehicle aesthetics while adding to aerodynamic efficiency.



### R18 alloy wheels with aero inserts

Stylish, modern and aerodynamic design for a smooth and efficient drive.



**Electric front charging lid**  
Convenient electric front charging lid for hassle-free charging every time.



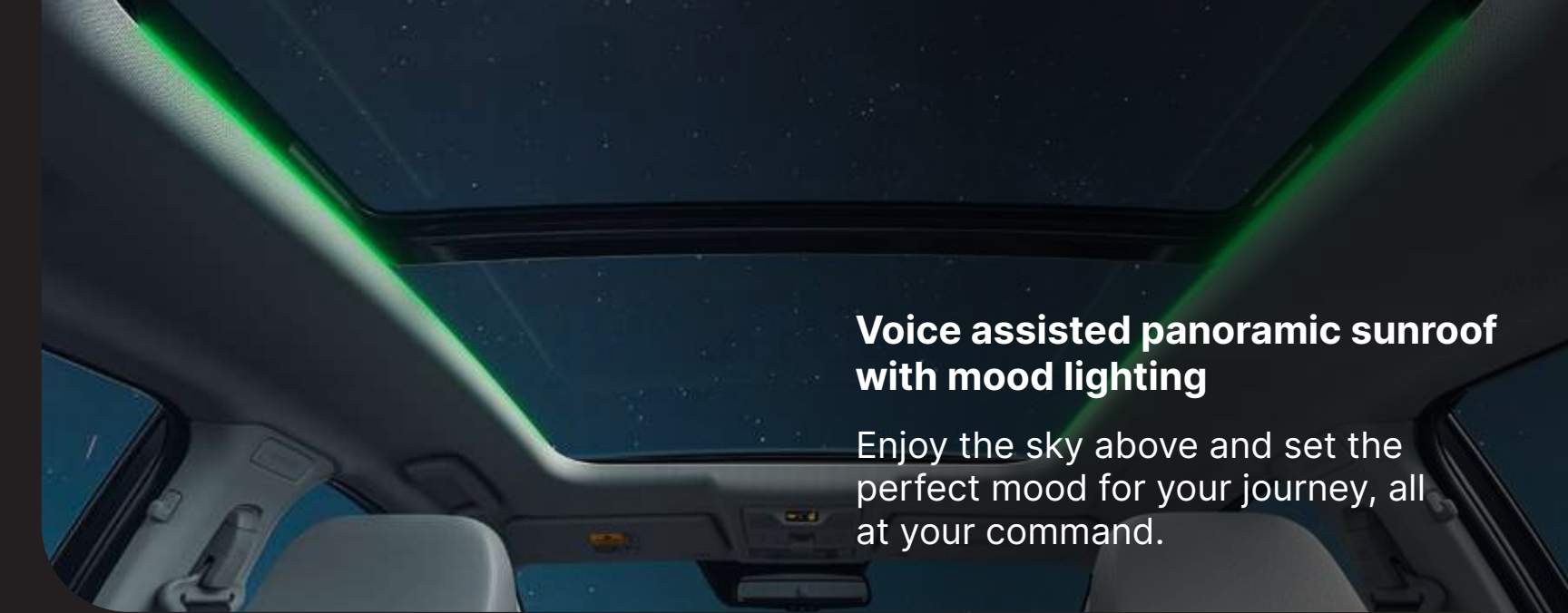
**Digital dashboard**  
Your command center for the long journeys ahead.



**Phyigital control panel**  
For simplified operation of essential functions.



**Smart digital shifter**  
Sleek looks and a futuristic driving experience.



**Voice assisted panoramic sunroof with mood lighting**

Enjoy the sky above and set the perfect mood for your journey, all at your command.



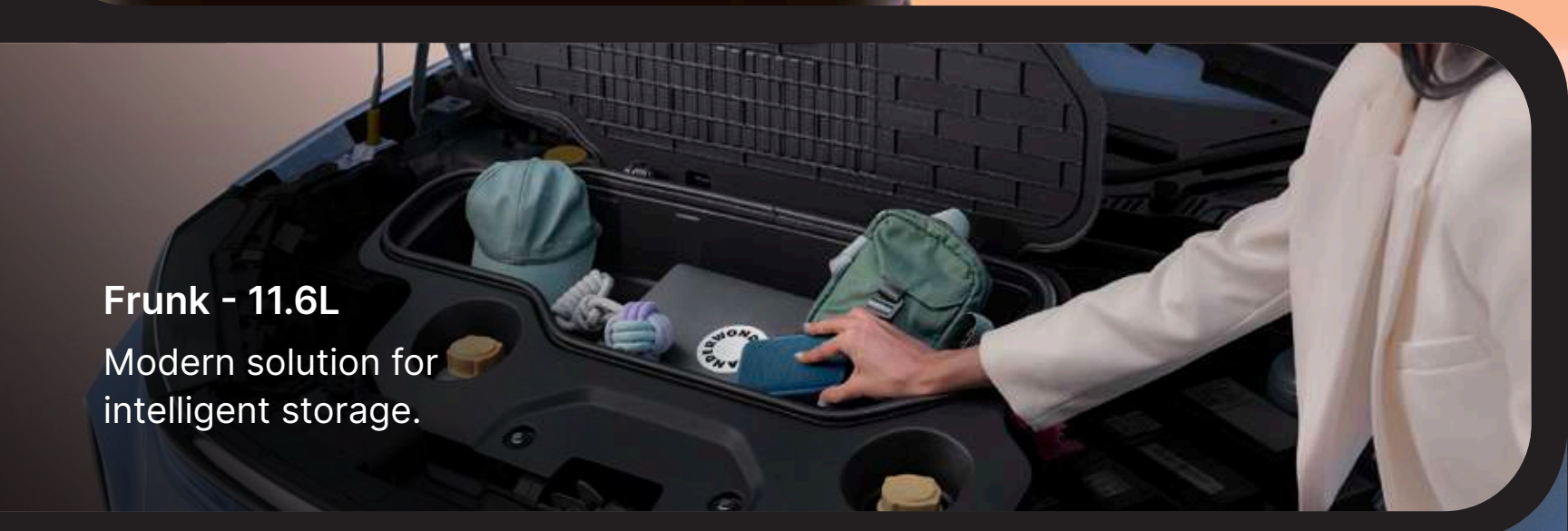
**Multi mood ambient lighting**

Illuminate your journey with the perfect ambiance, tailored to your every mood.



**Boot space - 500L**

There's always room for all your adventures, big or small.



**Frunk - 11.6L**

Modern solution for intelligent storage.



**Sharkfin antenna with GPS**

Where sleek styling meets superior connectivity.

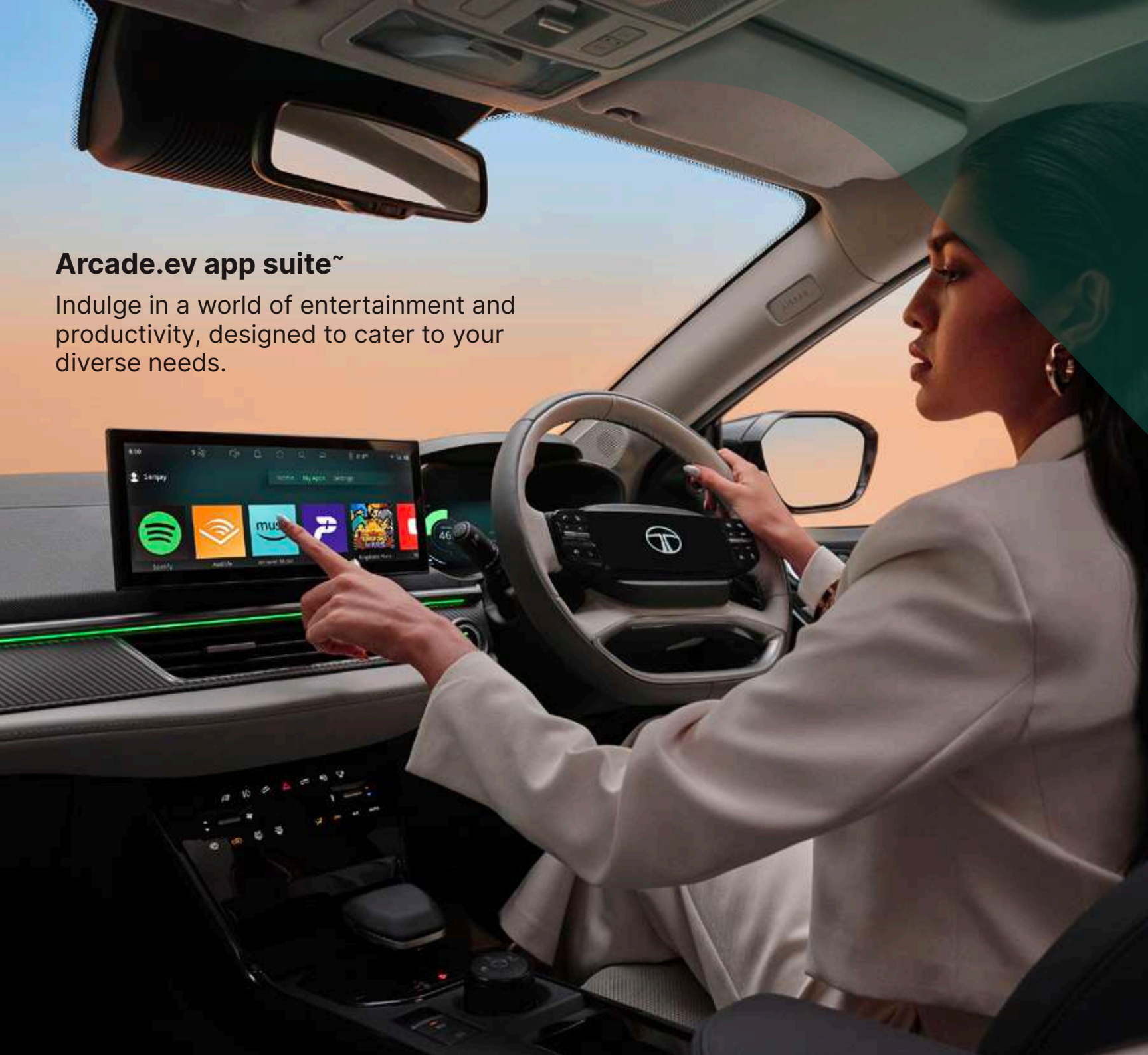
shaped for innovative technology —

Get entertainment and productivity on the go with modern tech.



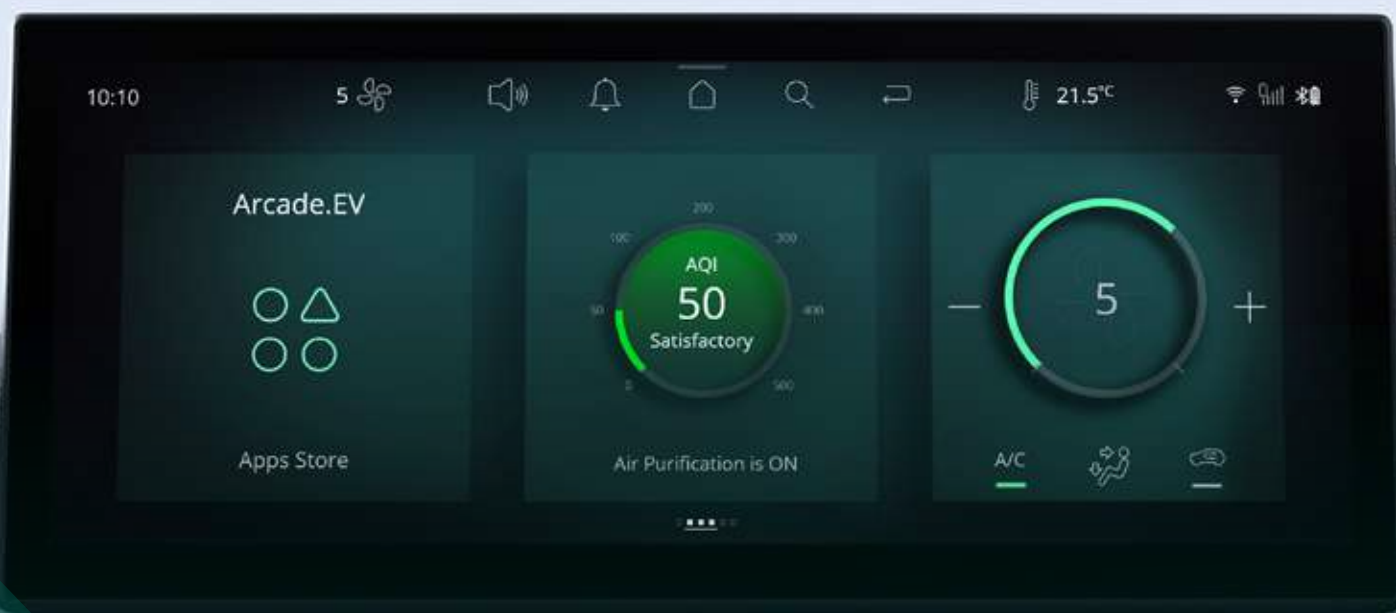
## Arcade.ev app suite~

Indulge in a world of entertainment and productivity, designed to cater to your diverse needs.



## 31.24 cm (12.3") Cinematic Touchscreen Infotainment System by HARMAN™

Bring your infotainment to life with stunning clarity and detail.



## JBL cinematic sound system

Indulge in an experience that offers crystal-clear and immersive sound that enhances your in-car driving experience.

The JBL logo is displayed in white on a dark, perforated speaker grille. The grille consists of a grid of small circular holes.

## Wireless Android Auto™ and Apple CarPlay™

Connect wirelessly with ease.

## High-quality speakers (9 speakers incl. subwoofer)

Ensuring every note and beat is delivered with exceptional clarity and depth.



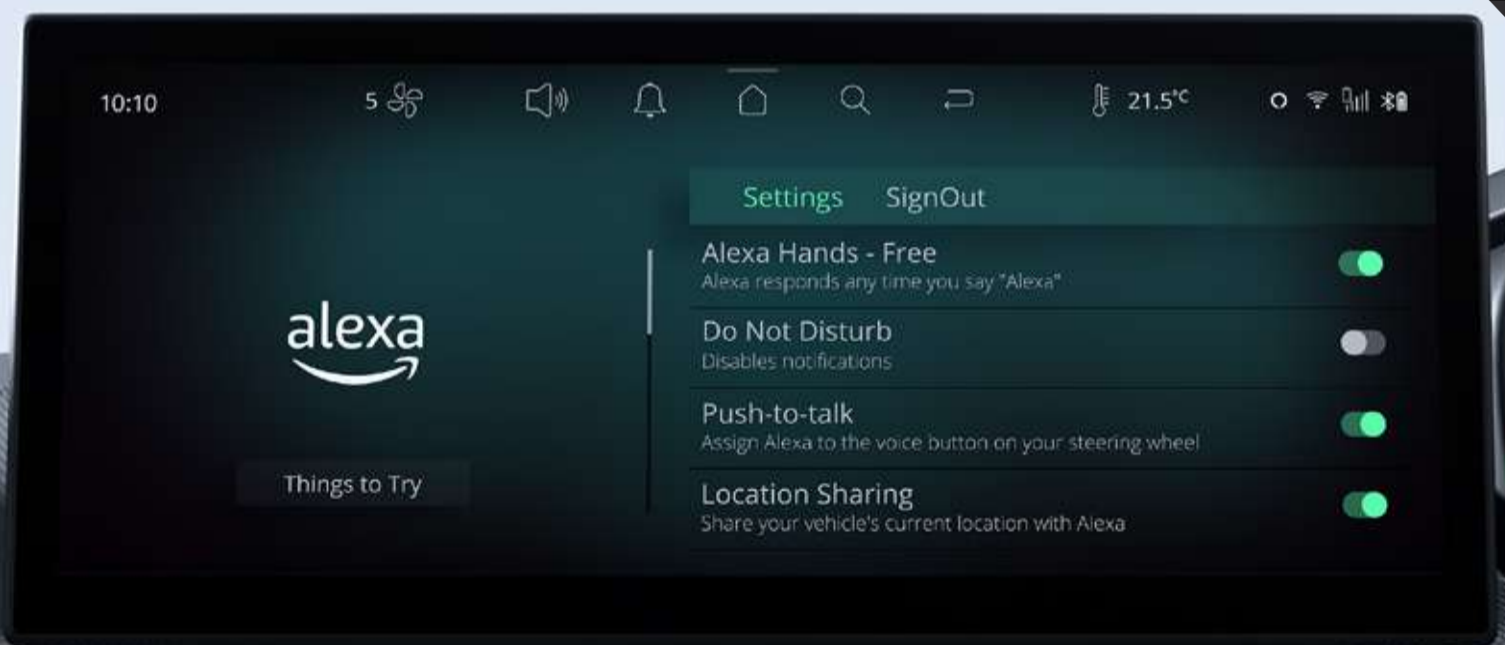
## JBL sound modes

Multiple audio modes that enhance in-vehicle acoustic experience.



## Multiple voice assistants

Interact effortlessly, ensuring seamless integration and enhanced connectivity.



## Alexa voice assist

Access a world of convenience with Alexa voice assist.

## Vehicle to vehicle (V2V) charging<sup>^^^</sup>

Share power with compatible vehicles.



## Vehicle to load (V2L) technology<sup>\*\*\*</sup>

Whether it is a drone, e-scooter or a camping experience - transform your EV into a mobile power hub.



## Powered tailgate with gesture activation

Convenient loading and unloading with a simple kick gesture.



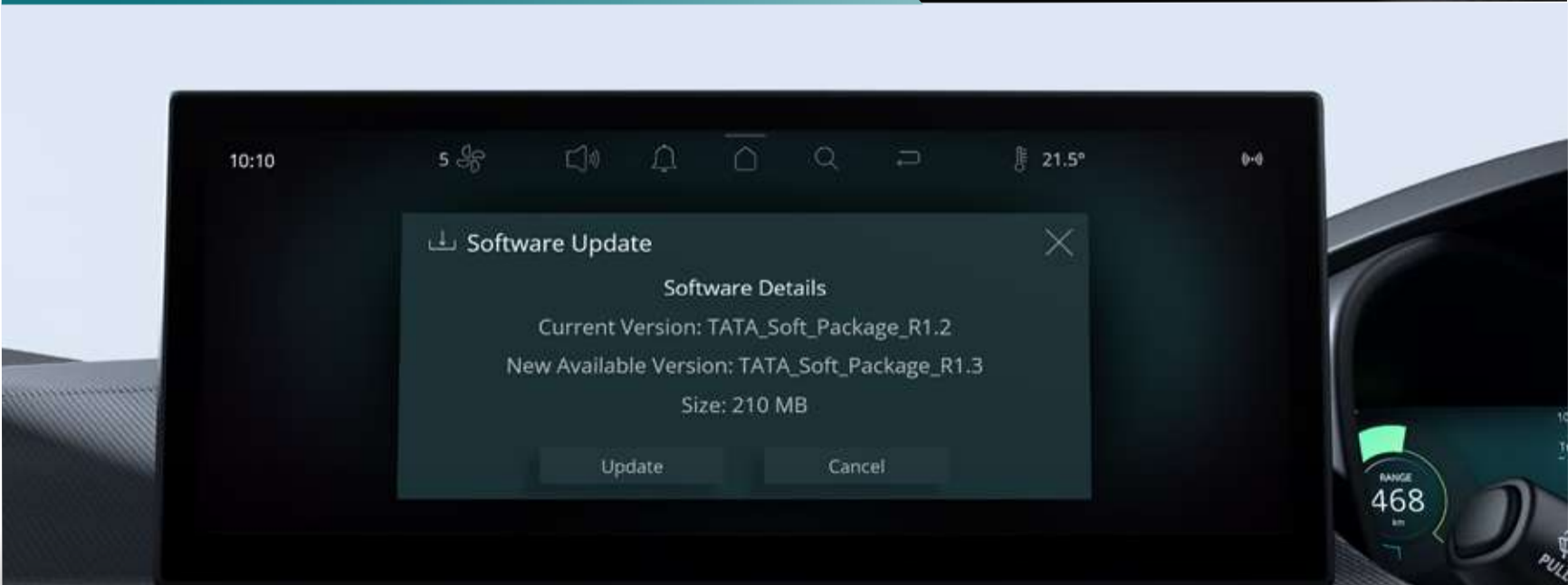
## 26.03 cm (10.25") digital cockpit

Stay informed and in control with customisable displays tailored to your preferences.



### Multi dial view in cluster

Switch effortlessly between multiple displays.



### OTA updates

Your car stays up to date with Over-the-Air Updates.

## Air purifier with AQI display

Breathe fresh, drive safe.



## Electric ORVM with autofold

Improved driving experience with easy mirror control.



## Auto-dimming IRVM

Glare-free night drives.



## Wireless smartphone charger

Stay powered up on the go and always ready for your next adventure.



## iRA.ev<sup>##</sup> & smart watch <sup>^^</sup> connectivity

Keep a watch on your Curvv.ev at all times.



# shaped for grandeur —

Indulge in the luxury of first-class driving experience.





**Plush Benecke-Kaliko Leatherette Seats with active ventilation**

Luxurious and refreshing comfort for a first-class driving experience.



**6 way power adjustable driver seat**

Personalise your driving position with power adjustable settings.



**6 way adjustable co-driver seat**

Equal comfort for co-driver.



**60:40 rear split seats with centre armrest**

Adapt to your cargo and passenger needs.

**Rear armrest with EasySip cup docks**

Comfort flows through every seat.



### **PureComfort Footrest**

A superior floor footrest that provides unmatched comfort for the rear co-passenger.



### **ErgoWing Headrest**

Ergonomically designed winged headrests that cradle your posture and keep you relaxed, even on the longest drives.



### India's First R-Comfort® Seats with Passive Ventilation

Seats that feel like a warm hug & makes every mile easier, so when you take the Curvv.ev, you enjoy unmatched comfort all the way.

R-Comfort® is a registered trademark of Adient.



### Serenity screen rear sunshades

The rear sunshade transforms your cabin into a private oasis, shielding you from the heat while enhancing the exclusivity of your drive.

## 2 stage rear seat reclining

Personalised comfort for rear passengers during long journeys.



## Rear AC vents

Efficient airflow for rear passengers.



## Cooled glove box

A ventilated compartment for refreshing storage on the go.



## Automatic headlamps

Optimal illumination on the road.





## Rain sensing wipers

Clear visibility and enhanced safety during inclement weather.

## FATC with express cooling

Personalised comfort for every drive.



## Cruise Control

Maintain your desired speed with precision and ease on long journeys.

## Keyless entry & push-button start

Unlock and go effortless convenience at your fingertips.



## Front & rear fast charge C type 45W

Fast charge your devices.

# shaped for absolute safety —

Stay safe keep the adventure alive on every journey.



**BNCAP**  
5-star safety rating\*



## Advanced driver assistance - Level 2 <sup>Δ</sup>

An advanced driver assistance suite that offers a shield of protection on every journey.



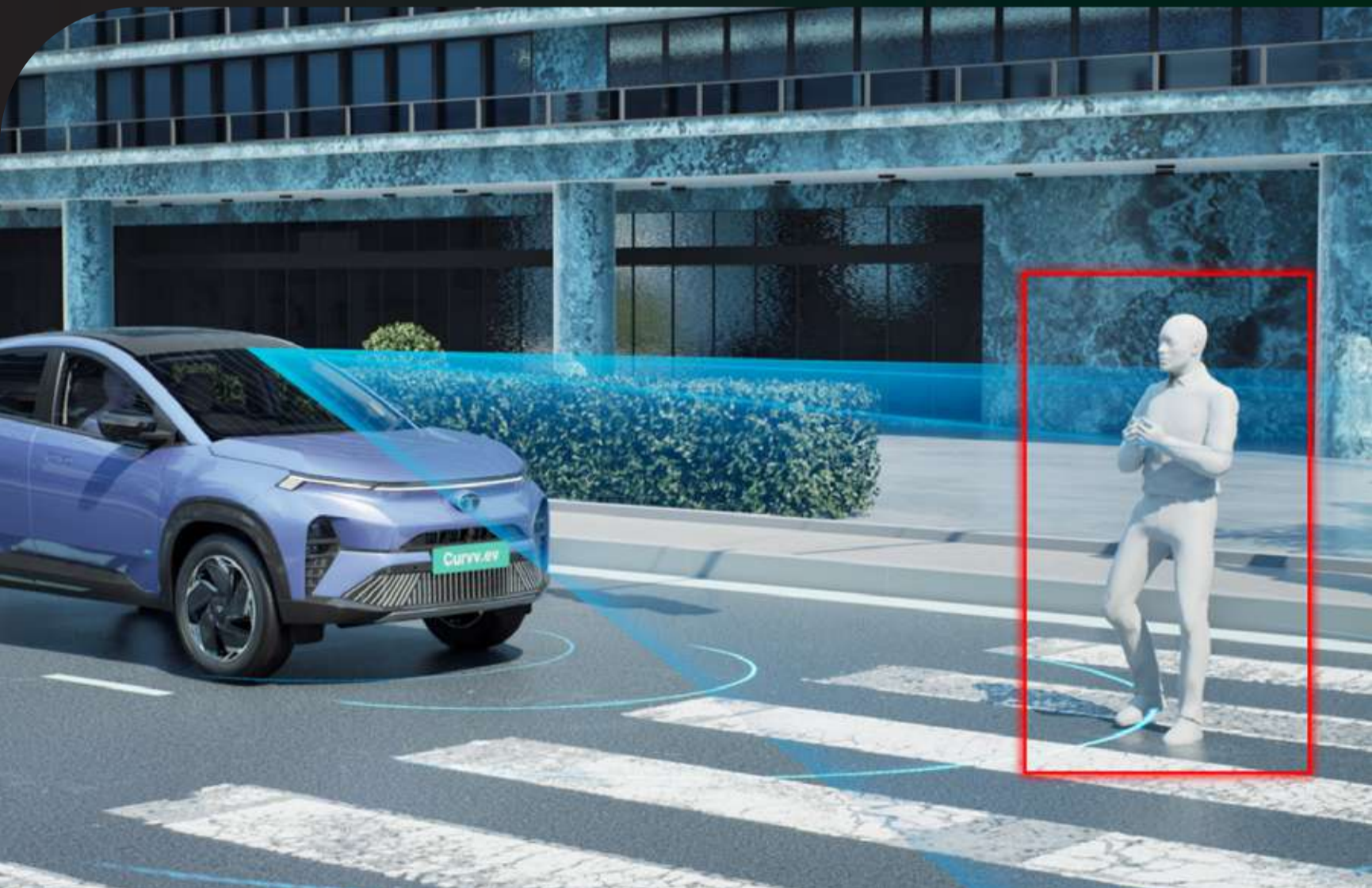
## Adaptive Cruise Control (ACC) with stop & go and Adaptive Steering Assist (ASA)

Cruise through long journeys maintaining a pre-determined distance from the vehicle in front, even in stop-and-go traffic.



### **Lane Keep Assist (LKA)**

Receive gentle nudges to keep you on course and in control on every curve.



### **Autonomous Emergency Braking (AEB) Vehicle, Pedestrian, Cyclist, Junction**

Automatically applies brakes to prevent or mitigate collisions and keep you safe.



### **Traffic Sign Recognition (TSR) and Over Speed Alert (OSA)**

Detects and displays traffic signs, ensuring you're aware of speed limits and other road regulations.



### **Rear Cross Traffic Alert (RCTA)**

Detects approaching vehicles and alerts you of impending collision.



### **Lane Change Alert (LCA)**

Alerts you of approaching vehicles while indicating a lane change.

## 360° 3D surround view camera system

Enhanced parking and maneuvering safety.



## Blind Spot view Monitor (BSM) - camera based

Camera-based monitoring of blind-spots with display on infotainment screen or instrument cluster.



### **Blind Spot Detection (BSD) - radar based**

Radar-based monitoring of blind-spots with warning indication on the ORVM.

### **Lane Departure Warning (LDW)**

Get warnings and assistance to prevent unintended lane departures.

### **Forward Collision Warning (FCW)**

Receive warnings to prevent front collisions.

### **High Beam Assist (HBA)**

Ensures optimal visibility without dazzling other drivers.

### **Door Open Alert on ORVM**

Alerts occupants while opening doors.

### **Driver doze-off alert**

Electronic stability control based driver attention alert.

### **Rear Collision Warning (RCW)**

Ensures you are alerted to any approaching dangers from the rear.



### **Electronic Parking Brake with Auto hold**

Keeps your car at a complete stop until you press the accelerator.



### **SOS call function###**

Immediate assistance in emergencies or breakdown.



### **Front parking sensors**

Parking made easier with front assist sensors.



### **6 airbags**

6 strategically placed airbags to minimise injury in the event of a collision.



### **All wheel disc brakes**

Enhanced safety with disc brakes on all wheels for optimal stopping power.



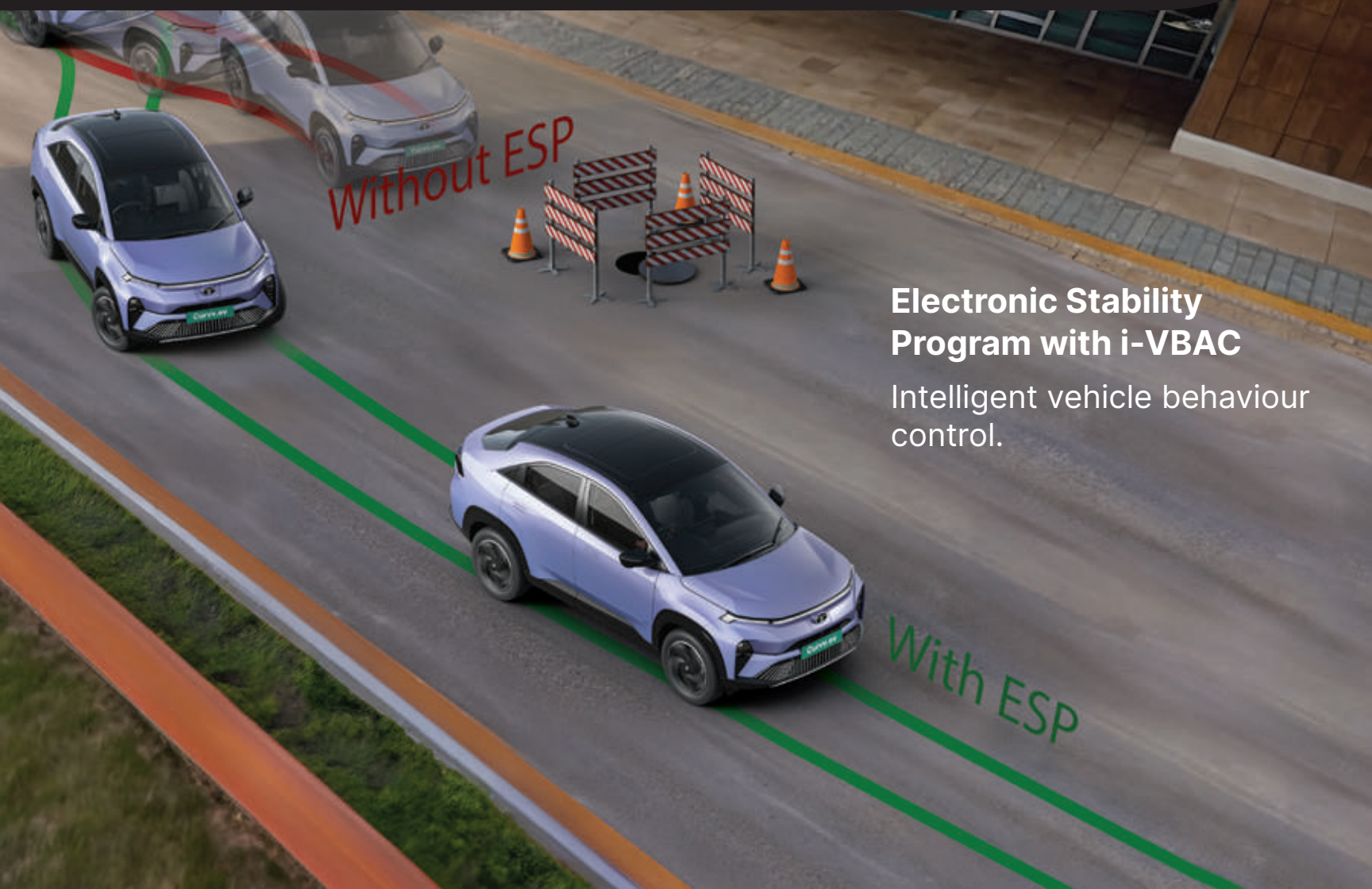
### Hill hold assist

Holds your car from rolling back on any incline till you accelerate forward.



### Hill descent control

Maintain a controlled speed for safer downhill driving.



### Electronic Stability Program with i-VBAC

Intelligent vehicle behaviour control.

# shaped for performance —

Experience dynamic performance for unforgettable drives.



## Dynamic drive, thrilling performance

A dynamic driving performance for an unforgettable experience.



## Long driving range of 502<sup>#</sup> Kms on a single charge

For extended adventures without the worry of a charging stop.

## Power output of 123 kW (167 PS)

Unleash the power of the electric powertrain at the tap of the pedal.

## Instant torque of 215 Nm

Instant peak torque for an exciting drive feel.

## 0-100 Km/h in 8.6 s

Fast when you need it to be.



## Multi drive modes - Eco, City, Sport

Tailor your driving experience to suit your preferences.

## Paddle shifters for multi-mode regenerative braking

Multiple regenerative braking modes to suit your regen preferences at the tap of a paddle.



## All-new gen-2 motor

Robust performance and efficiency for an electrifying driving experience.



## Liquid cooled battery pack

Ensuring Thermal efficiency for optimal battery health and durability.

## IP67 rated battery pack and motor

Drive worry-free with high ingress protection standards.



## Smart power electronics

Smart algorithms to control vehicle electronics, charging speeds and battery thermal management.

shaped for various charging needs —  
Enjoy hassle-free drives with multiple charging options.



## DC fast charging

Minimal downtime and maximum convenience.  
SOC 10% - 80% in 40<sup>+</sup> minutes.



## 7.2 kW AC home wall box charger

Power up at home seamlessly.  
SOC 10% - 100% in 7.6<sup>+</sup> hours for Curvv.ev 55.



## 15A portable charger

Enjoy charging convenience wherever you go. Charges with any 15A power socket.



shaped for different personas —



# Multiple colour choices to pick from

## Empowered X 55



Virtual Sunrise



Empowered Oxide



Pure Grey



Pristine White



Nitro Crimson

## Accomplished X 55



Pure Grey



Empowered Oxide



Nitro Crimson



Pristine White

The images shown represent color availability for different personas only. Specifications may vary for each persona. The displayed colors may differ from the actual colors due to variations in screen settings, lighting conditions, and material finishes. For the most accurate color representation, please visit your nearest dealer.

Empowered X 55



Accomplished X 55



## Curvv.ev - technical specifications and features

	Curvv.ev 55
<b>Electric Drivetrain</b>	
Motor (Type)	Permanent Magnet Synchronous Motor (PMSM)
Electric motor power (kW)	123
Electric motor torque (Nm)	215
Multi Drive Modes	Multi drive mode - City, Sport & Eco
Battery pack (kWh)	55
Thermal management system	Liquid Cooled system
Ingress protection for motor & battery pack	IP67
Acceleration (0-100 km/h in sec)	8.6^
Top Speed (kmph)	160
Emission	Zero tailpipe emission
<b>Smart Drive Features</b>	
Smart Drive Features Smart regenerative braking	Multi-mode regenerative braking 4 Levels (Level 0 - 1 - 2 - 3) 0 - No regen   3 - Max. regen
Paddle Shifters to control Regen Modes	✓
Customizable Single Pedal Drive	✓
<b>Dimensions</b>	
Length x Width x Height (mm)	4310 × 1810 × 1637
Wheelbase (mm)	2560
Unladen ground clearance (mm)	186
Boot space (Liter)	500
<b>Steering</b>	
Steering	Electrically power assisted
Turning circle radius (m)	5.35
<b>Brakes</b>	
Front, Rear	Disc brakes with i-VBAC
<b>Suspension</b>	
Front Suspension	Independent MacPherson strut with coil spring
Rear Suspension	Twist beam with dual path strut
<b>Wheels &amp; Tyres</b>	
Size (Persona)	215/60 R17 (Accomplished X)   215/55 R18 (Empowered X & #DARK)
Low Rolling Resistance Tires	✓
<b>Charging</b>	
Charging Standard	CCS2
Portable charging cable	Yes
Charging options	15A Socket, 7.2 kW AC Wall Box, DC Fast Charger
Charger Type Included	7.2 kW AC Wall Box <sup>o</sup>
Estimated regular charging time (SOC 10% to 100% from any 15A plug point)	21.0 hrs <sup>▲</sup>
Estimated regular charging time (SOC 10% to 100% from 7.2 kW AC fast charger)	7.9 hrs <sup>▲</sup>
Estimated DC fast charging time (SOC 10%-80%)	40 min <sup>▲</sup> (70 kW+ charger)
<b>Bi-Directional Charging</b>	
Vehicle to Vehicle Charging (V2V <sup>***</sup> Charging) (kVA)	5
Vehicle to Load Charging (V2L <sup>***</sup> Charging) (kVA)	3.3
Discharge Limit	Customizable upto 30% SOC <sup>o</sup>
<b>Warranty</b>	
HV Battery Pack	Lifetime Warranty and Unlimited Kilometres <sup>++</sup>
Motor Warranty	8 Year or 1,60,000 km (whichever is earlier)
Vehicle warranty	3 Year or 1,25,000 km (whichever is earlier)
<b>Driving range</b>	
Certified Full Charge Range (as per MIDC Part 1 + Part 2 Cycle) <sup>#</sup> (km)	502
TATA.ev C75 estimated real world driving range (km)	400 - 425

## accomplished X 55

- LED DRLs
- LED Headlamps
- Connected Tail Lamps
- Front Fog Lamps with Cornering Function
- Flush Door Handles
- R17 Alloy Wheels with Aero Inserts
- Rain Sensing Wipers
- Automatic Headlamps
- Panoramic Sunroof
- Electric ORVM with Autofold
- Smart Digital Shifter
- Smart Digital Steering Wheel
- 26.03 cm Cinematic Touchscreen Infotainment by HARMAN™
- 26.03 cm Digital Cockpit
- Navigation in Cockpit - Driver View Maps
- 4 Speakers + 4 Tweeters
- Wireless Smartphone Charger
- Front & Rear Fast Charge C Type 45W
- Leatherette Wrapped Steering Wheel
- Front Armrest
- Rear Centre Armrest with EasySip Cup Docks
- Cooled & Illuminated Glove Box
- Android Auto™ & Apple CarPlay™ over WiFi
- iRA.ev<sup>##</sup> & Smart Watch<sup>^^</sup> Connectivity
- Multiple Voice Assistants (Native, Siri, Google Assistant, Alexa)
- 360° 3D Surround View Camera System
- Blind Spot View Monitor
- Front Parking Sensors
- HD Camera Based Reverse Park Assist
- Push Entry Push Start (PEPS)
- Cruise Control
- Paddle Shifter for Regen Modes
- Multi Drive Modes - Eco, City & Sport
- Electric Parking Brake with Auto Hold
- Fully Automatic Air Conditioner
- Express Cooling
- Rear AC Vents
- R-Comfort® Seats with passive ventilation
- Plush Benecke-Kaliko Leatherette Seats
- 6 Way Adjustable Driver Seat
- Air Purifier
- PureComfort Footrest
- ErgoWing Headrest
- Serenity Screen Rear Sunshades
- Power Windows
- 6 Airbags
- ESP with i-VBAC
- Driver Doze-off Alert
- All-Wheel Disc Brakes
- Tire Pressure Monitoring System
- Automatic Defogger

# empowered X 55

over accomplished X 55

- LED Projector Headlamps
- Smart Digital Lights with Sequential Indicators
- Welcome & Goodbye Sequence
- Centre Position Lamp with Smart Charging Indicator
- R18 Alloy Wheels with Aero Inserts
- Voice assisted Panoramic Sunroof with Mood lighting
- Powered Tailgate with Gesture Activation
- Frunk
- Multi Mood Ambient Lighting
- 6 Way Power Adjustable Driver Seat
- 6 Way Adjustable Co-Driver Seat
- 60:40 Rear Split Seats
- 31.24 cm Cinematic Touchscreen Infotainment by HARMAN™
- JBL™ Cinematic Sound System(4 Speakers + 4 Tweeters + Subwoofer)
- JBL™ Sound Modes
- Auto Dimming IRVM
- Front Seats Active Ventilation
- 2 Stage Rear Seat Recline
- Arcade.ev~ App Suite
- V2V Charging<sup>^^</sup>
- V2L Technology<sup>\*\*\*</sup>
- 7.2 kW AC Fast Charger Wall Box
- Air Purifier with AQI Display
- Voice assisted Panoramic Sunroof with Mood lighting
- Multi Mood Ambient Lighting
- Front Seats Active Ventilation
- 2 Stage Rear Seat Recline
- Level 2 ADAS<sup>Δ</sup>
  - Adaptive Cruise Control with Stop & Go (ACC)
  - Lane Departure Warning (LDW)
  - Lane Keep Assist (LKA)
  - Blind Spot Detection (BSD) - Radar based
  - Blind Spot View Monitor (BSM) - Camera based
  - 360° 3D Surround View Camera System
  - Lane Change Alert (LCA)
  - Adaptive Steering Assist (ASA)
  - Forward Collision Warning (FCW)
  - Autonomous Emergency Braking - Vehicle (AEB - V)
  - Autonomous Emergency Braking - Pedestrian (AEB - P)
  - Autonomous Emergency Braking - Cyclist (AEB - C)
  - Autonomous Emergency Braking - Junction (AEB - J)
  - High Beam Assist (HBA)
  - Traffic Sign Recognition (TSR)
  - Over Speed Alert (OSA)
  - Rear Cross Traffic Alert (RCTA)
  - Rear Collision Warning (RCW)
  - Door Open Alert on ORVM
  - Driver Doze-off Alert
- SOS call####

Coverage of Lifetime HV Battery Warranty is as below:

Model / Brand	Lifetime Warranty First Registration		Standard Warranty Second Registration onwards*** (whichever occurs first)	
	Years	Km	Years	Km
Curvv.ev	Lifetime*	Unlimited**	8 <sup>Δ</sup>	1.6 Lakh <sup>Δ</sup>

\*The term 'Lifetime' refers to the period of fifteen years from the first date of registration of the vehicle at the local regional transport office, in accordance with the Motor Vehicles Act, 1988, and is restricted for the period of use during the first registration only.

\*\* The term 'Unlimited' is on the assumption of fair usage by a customer for personal use of the vehicle and therefore excludes extra-ordinary usage or usage outside the ordinary course as would be reasonably expected for vehicle not being used for commercial / trade purposes.

\*\*\* It is incumbent on every second (or subsequent) owner to inform TATA Passenger Electric Mobility Limited of the vehicle ownership transfer for HV Battery Warranty to apply. The HV Battery Warranty stated above shall not be available to the second or subsequent owner in absence of such notification.

Disclaimers:

<sup>Δ</sup>Under ambient test conditions. <sup>Δ</sup>As per internal testing data, under ambient test temperature conditions. <sup>Δ</sup>ARAI Certified Urban + Extra Urban (MIDC Part 1 + Part 2) under standard testing conditions, actual performance figures may vary depending on various conditions including driving pattern, etc. <sup>Δ</sup>Smart watch is not part of vehicle equipment & accessories. <sup>Δ</sup>Applicable for compatible sink models only at a power output of 5kVA. <sup>Δ</sup>Maximum amount of power output is 3.3kVA. <sup>Δ</sup>Customers will be able to utilize iRA.ev services for one year from the date of activation. Post completion of one year, customers can subscribe to iRA.ev by paying subscription fees. R-Comfort® is a registered trademark of Adient. <sup>Δ</sup>Linked with active iRA.ev login. <sup>Δ</sup>Available in select cities. <sup>Δ</sup>Applicable on Empowered persona and #DARK. <sup>Δ</sup>Advanced driver assistant systems (ADAS) is not a substitute for human eye or driver vigilance. It is a driver assist system only to enhance safety and driving experience. The driver will remain responsible for safe, vigilant and attentive driving. Standard Disclaimer - Accessories/features shown may not be part of the standard fitment. The specification above are subject to change. Some of the equipment illustrated or described above may not be supplied as standard equipment and may be available at extra cost. Tata Passenger Electric Mobility reserves the right to change specification & equipment of any product without prior notice. Please consult your nearby dealer for full information and availability on colours and trim. The images shown represent color availability for different personas only. Specifications may vary for each persona. The displayed colors may differ from the actual colors due to variations in screen settings, lighting conditions, and material finishes. For the most accurate color representation, please visit your nearest dealer. <sup>Δ</sup>The warranty on the High Voltage battery shall be lifetime<sup>Δ</sup> for the first registration.